

INSTRUCTION MANUAL
Digital Ethernet Clock



Manufactured by:

ACE INSTRUMENTS

(A ISO 9001-2008 Certified Company)

Plot No.77, Shaktipuram, Industrial Estate Kukatpally, Prashanthinagar,
Hyderabad - 500072. India.

Phones: +91-40-23078848, 32901226,23078849

Email: sales@alwaysa.com; Website: www.alwaysace.com

DIGITAL ETHERNET CLOCKS WITH REMOTE PROGRAMMING

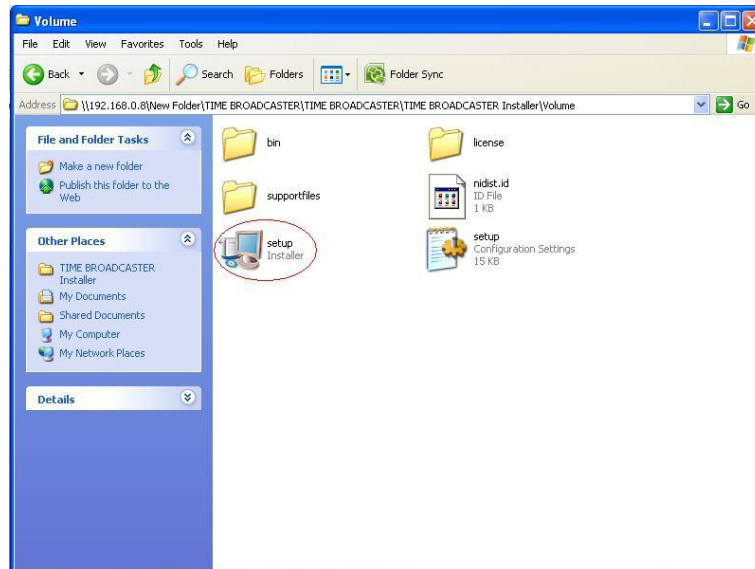
INSTALLATION PROCEDURE:

1. Remove the instrument carefully from the packing box. Inspect for any damage in transit.
2. Make a suitable stand for the instrument or alternatively make provision for wall mounting/modular wall mounting.
3. Mount the instrument on the wall/modular wall.
4. Connect the power supply of 230 V.A.C., 50 Hz, Single Phase to the Clock.
5. Now, close the Top Cover using the Allen Screws provided.

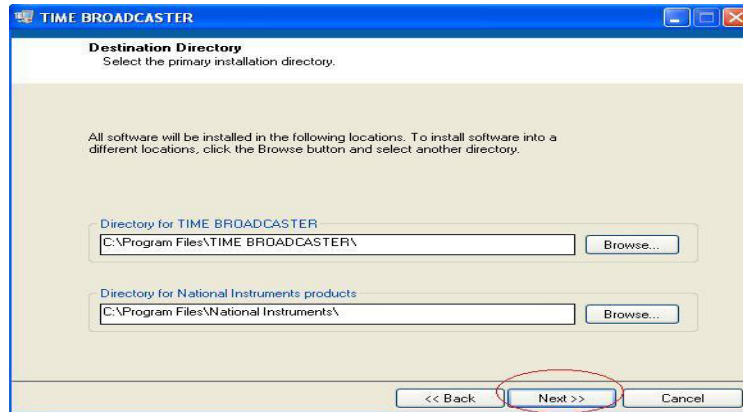
SOFTWARE INSTALLATION PROCEDURE:

Please follow below procedure of software installation.

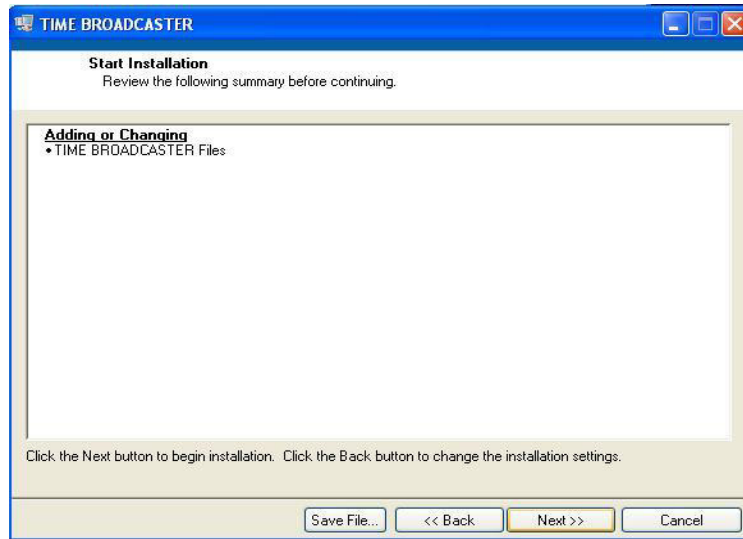
1. Open Time Broadcaster Installer Folder and run setup.exe.



2. Select Next Button.



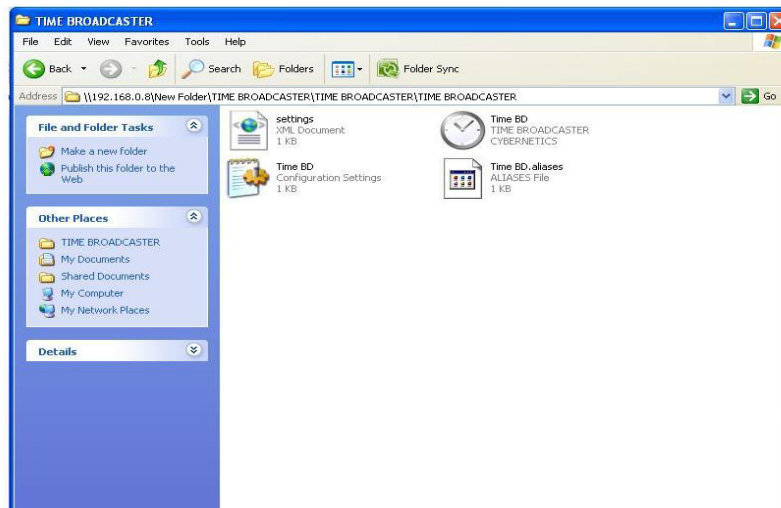
3. Press Next Button.



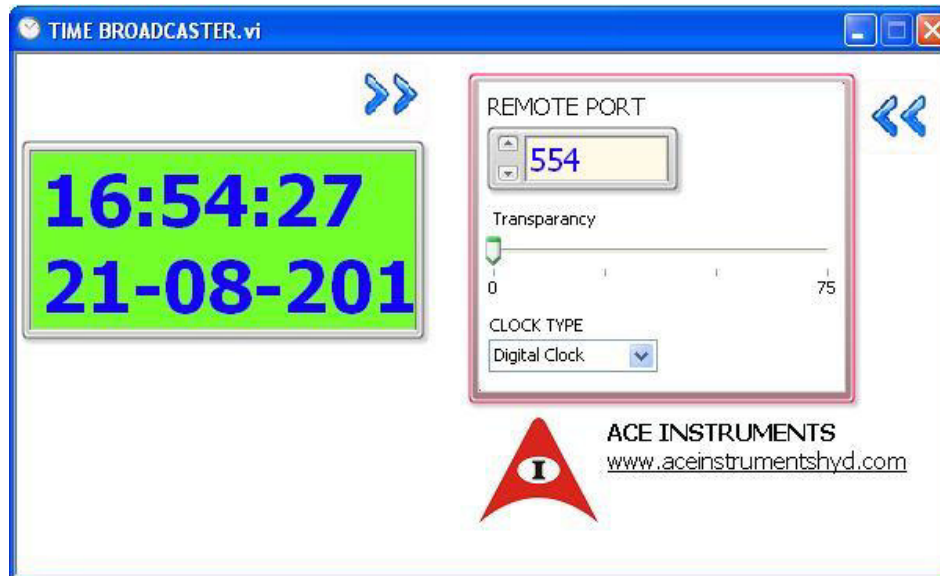
4. Click Finish.

5. Open Time Broadcaster Folder in CD.

6. Run Time BD Batch file.



7. Set **REMOTE PORT** No as **554** then clock connected to this system in LAN will be communicated and time will be set to system time.



8. Now the Ethernet Clock is programmed to accept the PC/Server Time from your Network.

OPERATION OF DIGITAL CLOCKS USING REMOTE CONTROL:

TIME SETTING:

1. Push power Button on remote, when pressed, enables the clock to go into the time setting mode. The first Digit in the clock starts to blink indicating that the clock is in the programming mode.
2. The ► Push Button upon pressing enables the digit selection, progressing Successively from the Hours to Minutes to Seconds.
3. The ▲ Push Button upon pressing enables the Selected Digit to be incremented in steps of 1. Alternatively , the number keys 1 to 9 can be used to program the time .
4. The Push Button **OK** key needs to be pressed again to exit the time setting mode. The clock is now in the Run mode.

The Clock can be given a scheduled time setting depending on application. The time needs to be set once in every 12 months for best performance & highest time accuracy.

Note: Remote Control Time Setting works only when Ethernet communication fails. So use remote when Ethernet communication fails.

SPECIFICATIONS :

Make	: Ace Instruments
Display 2 Digits (SS) of 2" height	: 4 Digits (HH:MM) of 4" Height, All 7 Segment Red LED Display
Time Setting (WithRemote)	: From Ethernet LAN & By the push keys on the Wireless infrared remote control unit
Accuracy	: Direct LAN Time Display; +/- 60 seconds per year in case of absence of communication by way of in-built high accuracy RTC
Power	: 230 Volts A.C., 50 Hz., Single Phase
Enclosure	: M.S Powder coated body with SS front flush plate

For any technical assistance, please feel free to contact factory at the below address...

ACE INSTRUMENTS

(A ISO 9001-2008 Certified Company)
Plot No.77, Shaktipuram, Industrial Estate Kukatpally, Prashanthinagar,
Hyderabad - 500072. India.

Phones: +91-40-23078848, 32901226,23078849

Email: sales@alwaysace.com; Website : www.alwaysace.com